

Operation:

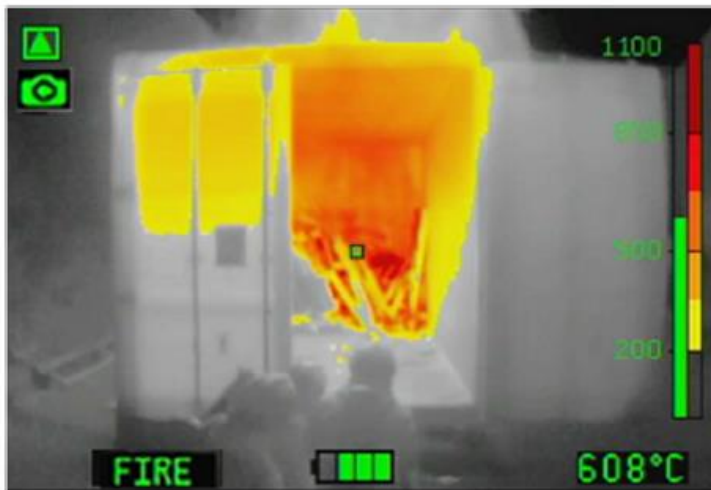
ON and OFF

The camera system completely boots after appropriate power supply is given.

MODES

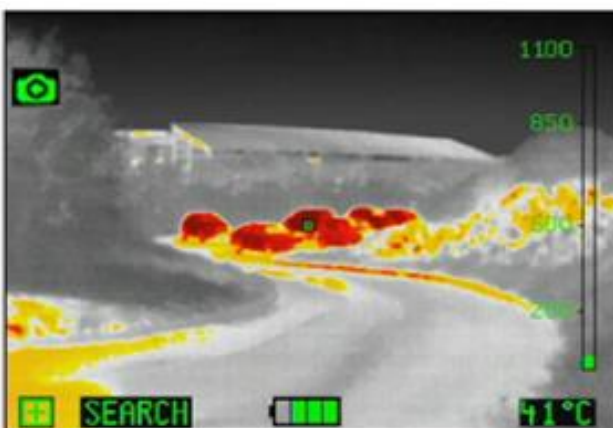
When put into operation, the picture automatically is in WHITE HOT mode. This means that brighter elements of the scene are warmer than darker elements. Pressing the button again, switches to the next COLOR mode.

SCENE COLORING



FIRE (STD)

Dark red > 850°C
 Red > 675°C
 Orange > 500°C
 Dark yellow > 350°C
 Yellow > 200°C
 White = Hot
 Black = Cold



SEARCH

The hottest 7 percent are colored from red to orange to yellow.

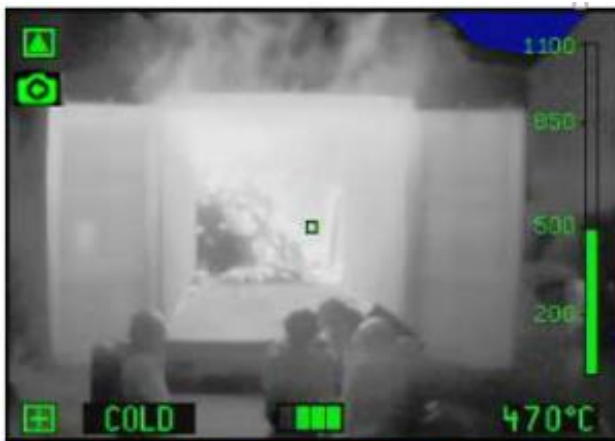
Person- or Hot-Spot Search

**INVERSE**

White = Cold
Black = Hot

Colors are displayed unchanged

For daylight environment and level indicators

**COLD FINDER**

The coldest places are displayed in blue

**MULTICOLOR**

For technical inspections and dangerous goods fire service

DYNAMIC TEMPERATURE RANGE

The dynamic temperature range is from -40°C to $+1150^{\circ}\text{C}$

TEMPERATURE MEASURING

In the center of the screen you will find a measuring point. From where this spot is directed at, the camera reads out the temperature and shows it in digits, at the lower left corner of the screen in $^{\circ}\text{C}$.

The measuring area of the camera is from -40°C to $+1150^{\circ}\text{C}$.

Warning:

The indicated temperature is not precise and might different from the reality. The reason for this deviation is the fact, that surface density of the targeted element, its structure, colour and other factors, influence the accuracy of the measurement.

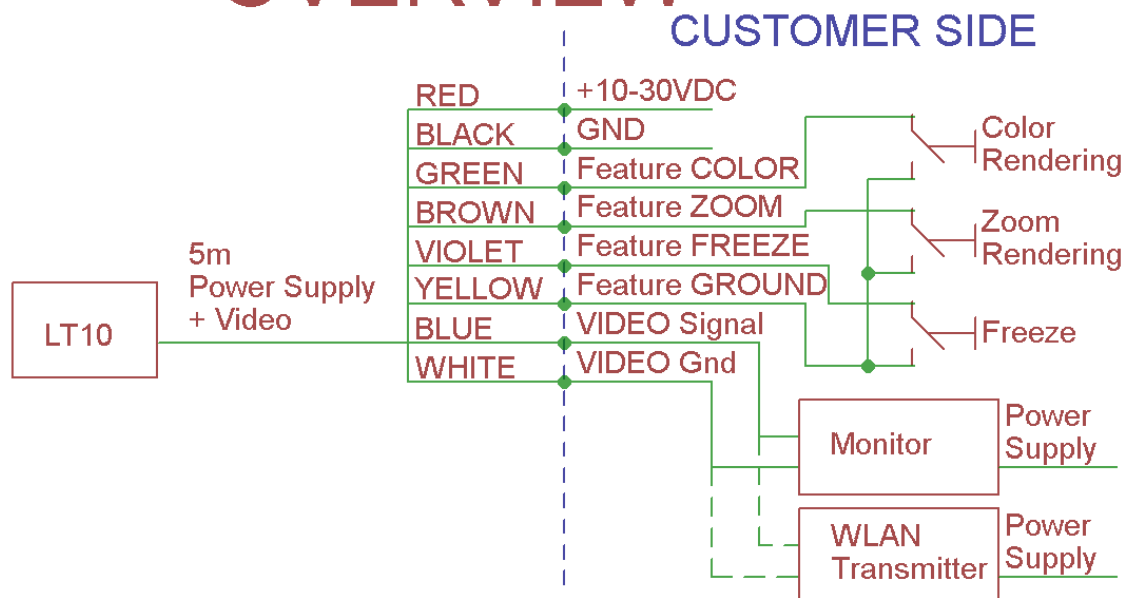
Window heater:



The camera is equipped with an automatic disc heater which switches on at a disc temperature $<5^{\circ}\text{C}$ and switches off at $>10^{\circ}\text{C}$.

For use in harsh or outdoor environments, we recommend to protect all wires with an additional protection hose. Please take care about maximum bending radii of all wires.

- red:** +10 to +30V DC
Consumption ca. 6Watt
We recommend 1,6 Ampere, slow blow fuse
- black:** GND, Ground
- green:** Feature COLOR RENDERING
- brown:** Feature ZOOM
- violet:** Feature Freeze
- yellow:** Feature GROUND
- blue:** Video signal (FBAS Signal), analogue Video Out
NTSC (480lines/60fps); 1 Vss / 75 Ohm
- white:** Video GND

OVERVIEW



	Manual and Pin Assignment Serie LT10				
	DokNr:	R001	RevNr:	1.0	

Shield of Cable:

The shield of cable must be connected to the vehicle ground or to the right mounting screw of the board within the connecting box.

Max bending radius of cable: 20mm

The camera supplies a video signal with 1V SS and has to be terminated with 75 Ohm, so a Display has to be connected to the system.

In case there is no display connected, or the specific display has a input impedance of more than 75 Ohm, the level of the video signal can be significantly above ca. 2Vss. A short circuit of the video signal is to be avoided.

Mounting brackets:

Attached mounting brackets are in two pieces. To optimize the cameras fit, the inside of the brackets are fitted with neoprene.

The neoprene fitting can be compressed to only so 1th of a millimeter. This way multiple different mounting environments can be supplied.

Brackets fit the middle part of the camera housing (60mm).

Direct the camera first (check scene with connected display) and than fix that position.