

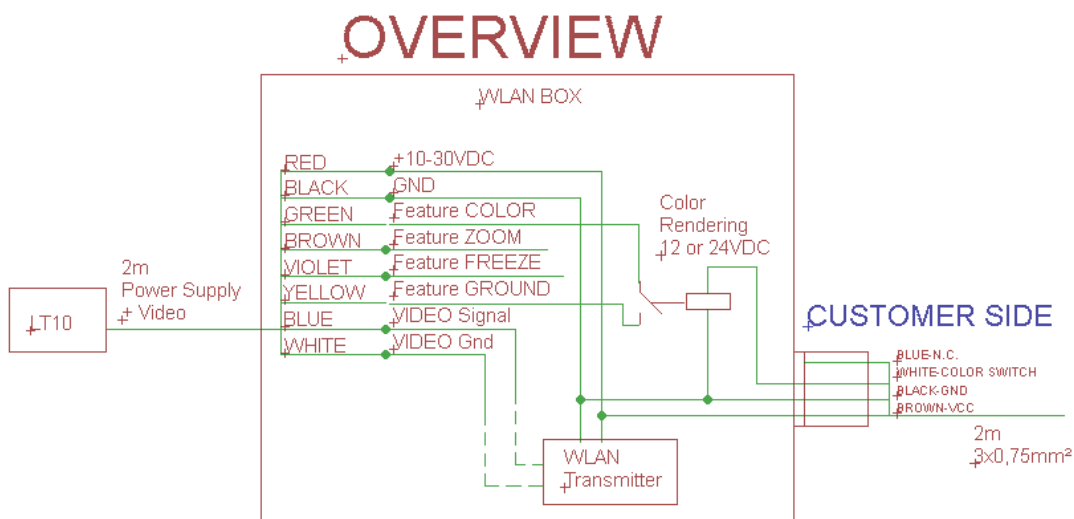
Technical Data

- Voltage: 10-30 DCV
- Input Video Signal: CVBS
- Resolution: HD(1280*720), SD(704*480), CIF(352*240)
- Power: Max. 500mA at 12V
- Frequency: 2421-2484 MHz
- Protocol standard: IEEE 802.11 b/g/n
- Operating System: iOS / Android 2.2 and higher
- Decompression format: MPEG4
- Transmit Output Power: 20 dBm
- Defer time: max. 400ms
- Transmission rate: 54Mbps
- Transmitting Distance (Barrier-free): 60m
- IP rating IP67



Thanks to an improved image compression technology, the WLAN Box can process a higher rate of data flow. The data is sent to every Android-based device via P2P.

Connection Plan:



App Installation

Please download and install the software “StreamVis” in the Google Play Store.

“StreamVis” Software Icon



Or install the application by entering the following link address or scanning the QR code on your mobile phone:

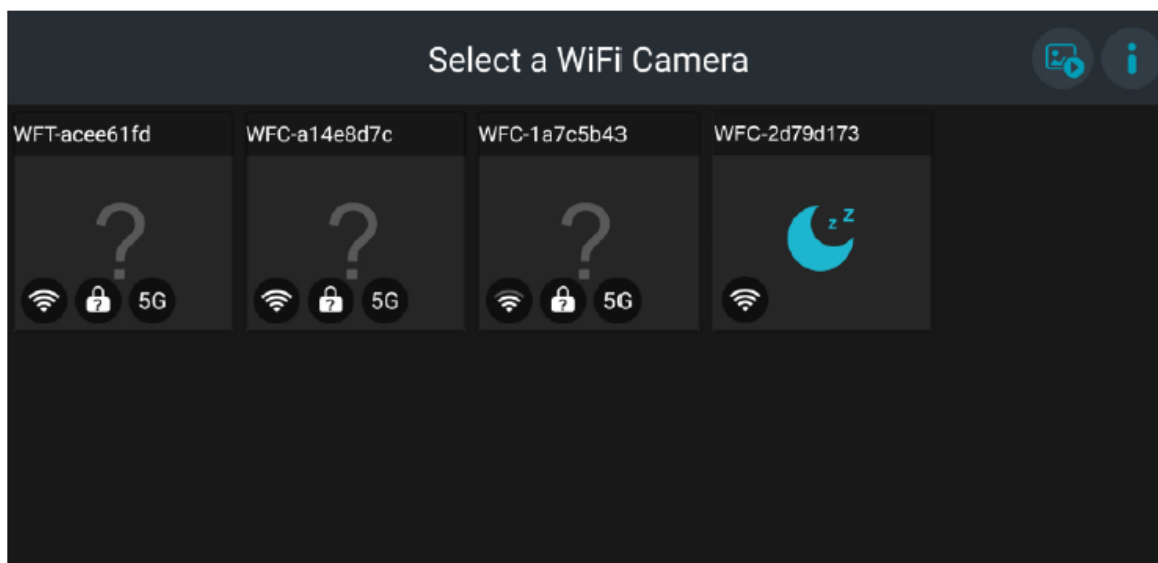
http://183.233.190.23:6061/tmp/android/StreamVis_install_1.5.5.19082



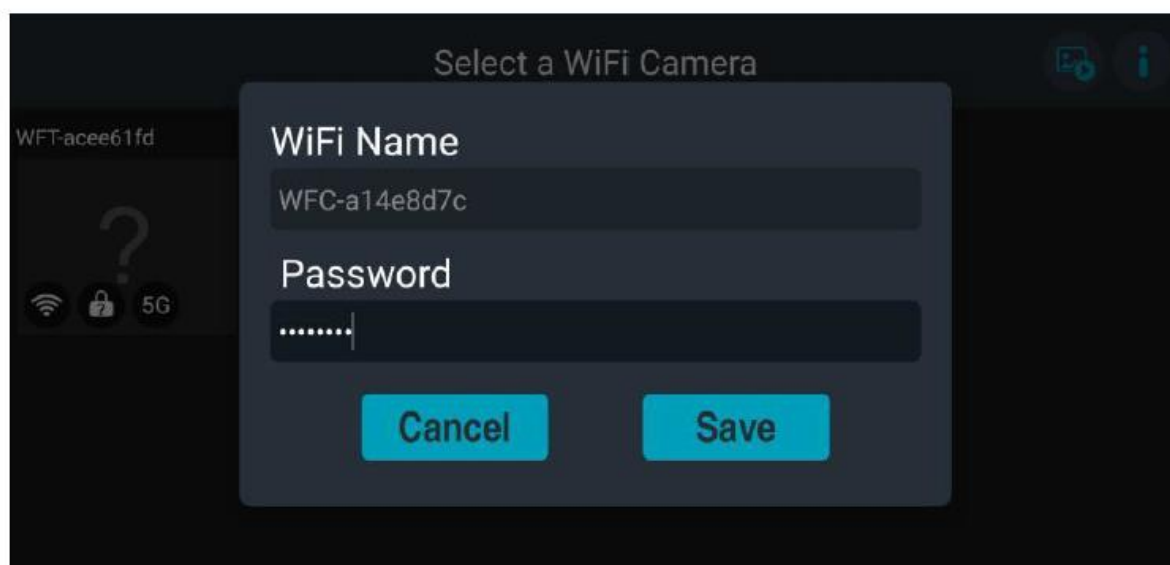
iOS: Search for the “StreamVis” app in the AppStore and install it on your iOS device.

APP Utilisation

- Supply the WLAN transmitter and the camera with voltage.
- Open the WLAN settings and connect with the SSID, starting with WFT-XXX
- Open the app on your mobile device.
- The app scans the surrounding WiFi devices, which are displayed in the form of thumbnails. Select the appropriate device for connection.



Enter default password 88888888 and save to connect.



Software Settings and Functions

If the connection is successful, the user is taken to the main menu. Lightly tap on the screen to display the functions.



Wi-Fi signal bar indicates the strength of the signal, the higher the level, the stronger the signal. the data indicates the transmission latency, the smaller the data, the smoother the video. When the latency is above 200ms, the signal icon and data will show a red alarm.

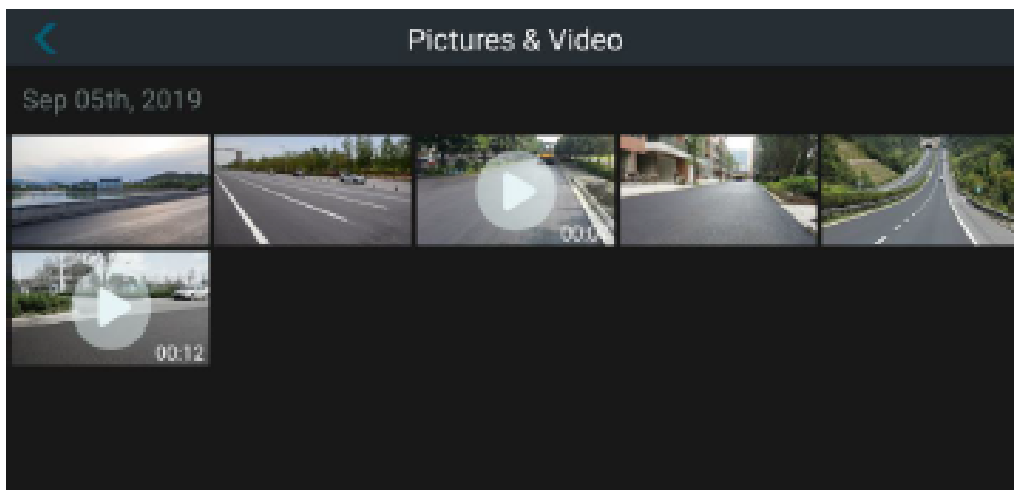


Touch recording icon to start recording, the icon will be red. Touch it again to stop recording and the icon will be in standard color. The recording will be saved in the album automatically.

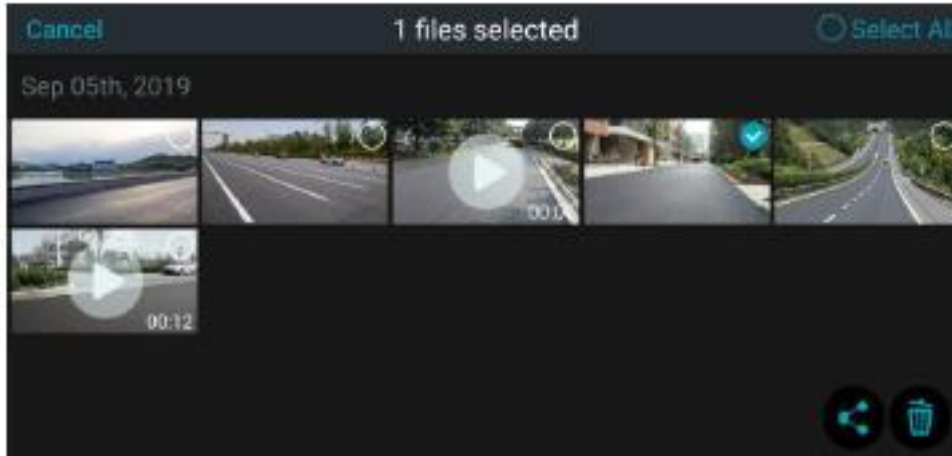
Permission needs approval on the first time you use capture and record function.



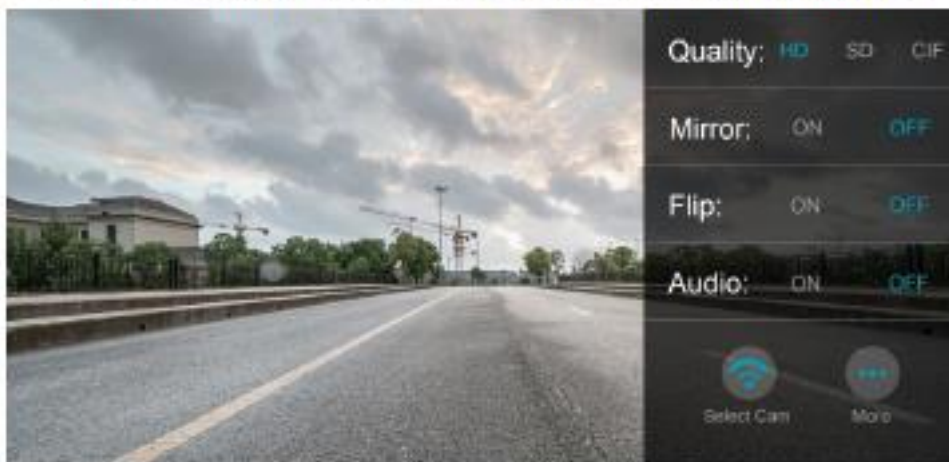
Touch "Album" to enter the interface of pictures and videos. Pictures and videos are grouped by date in the form of thumbnails. There is a "Playback" icon on the video thumbnail to distinguish them from the pictures. The duration of the video is shown on the lower right corner. A progress bar will appear at the bottom of the screen during video playback, and the progress bar can be dragged. Users can slide left and right when previewing album files. File saving time is shown on the file name.



Touch "Album" to enter the interface of pictures and videos. Press and hold the file thumbnails to enter file selection mode, which will show the check boxes. Tick "Select All" on the top right corner to select or cancel all files. When a file is selected, the number of selected files will be displayed at the top of the screen and files can be deleted or shared by clicking the corresponding icons on the lower right corner (Note: video sharing is not supported. If videos are selected, the "Share" icon will turn into gray). Press "Cancel" to exit file selection mode.



Touch "Settings" icon to enter the interface of main settings.



Detailed configuration options are described as below:

- Quality: HD(1280*720) SD(704*480) CIF(352*240)
- Mirror: ON OFF
- Flip: ON OFF
- Audio: ON OFF